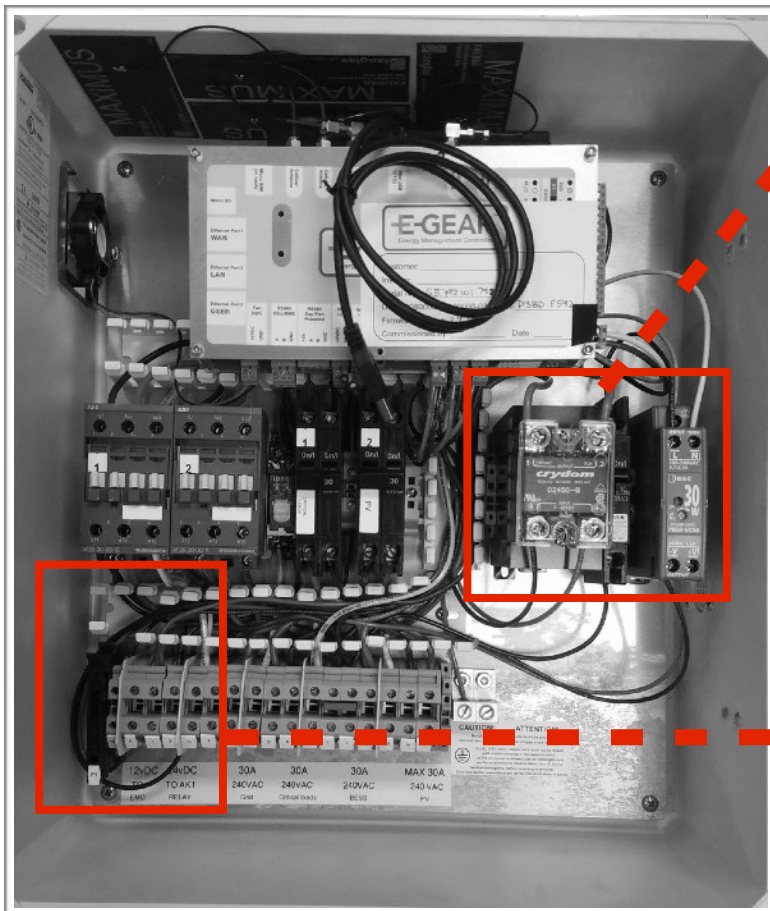


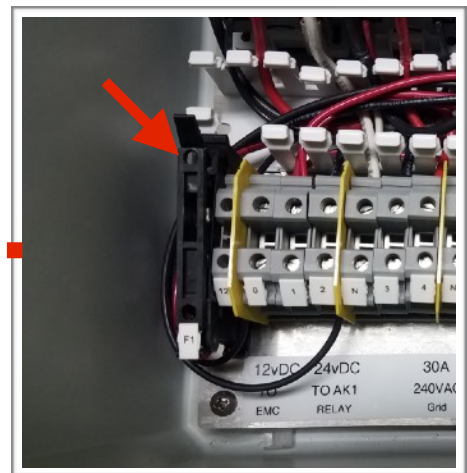
Power Cycling the Energy Management Controller (EMC)

If the Energy Management Controller (EMC) loses internet connection or communication with an external device. Cycling of the EMC power is a simple procedure that can sometime solve these issues quickly.

The attached pictures should help with this simple procedure. Be aware that the EMC has two sources of power. 1) AC power controlled by a circuit breaker 2) a 12vdc backup battery controlled by a fuse holder. You will need to disconnect both, wait 10 seconds, then plug them back in (no particular order).



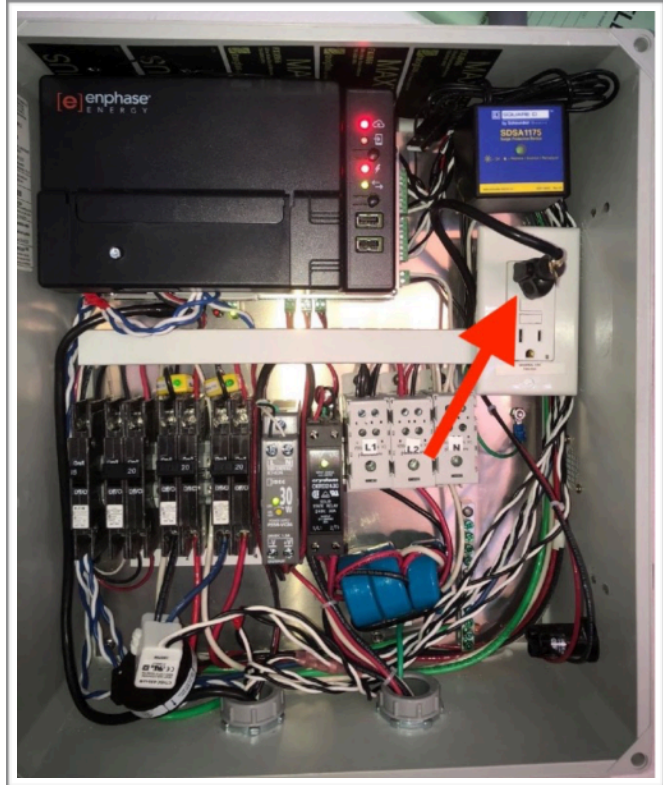
1) AC power controlled by circuit breaker



2) 12vdc backup battery controlled by a fuse holder

NOTE: Systems without energy storage and earlier models with energy storage may have a slightly different design. The earlier battery energy storage systems can be distinguished by their dual enclosure configuration mounted onto a single backplate assembly. The 12vdc battery will located in a lower separate enclosure in this design.

- 1) **Unplug the AC connection to the outlet in the main ACXIS box.**



- 2) **If your system includes energy storage , then also unplug the black 12v DC battery backup lead in the lower enclosure.**

You will need to disconnect both, wait 10 seconds, then plug them back in (no particular order).

